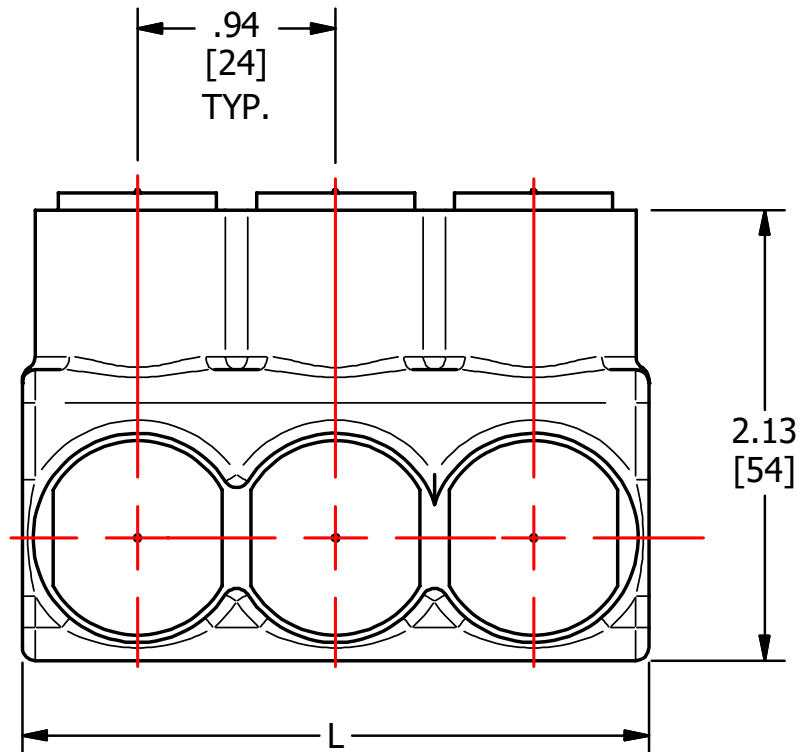
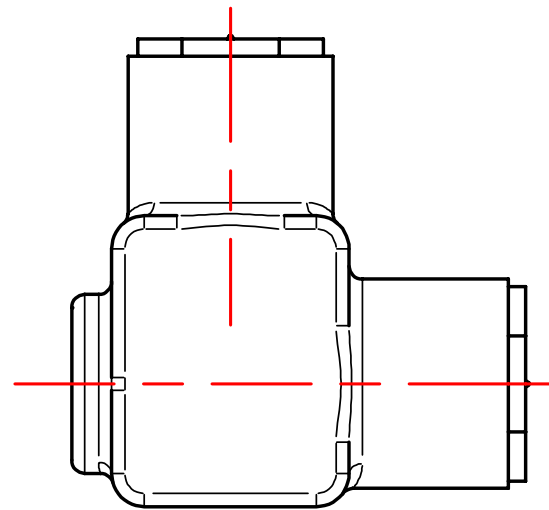
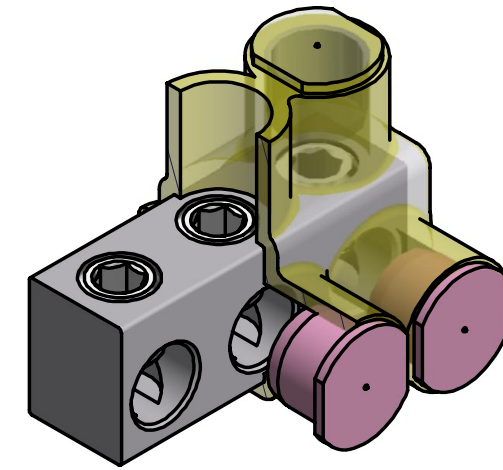
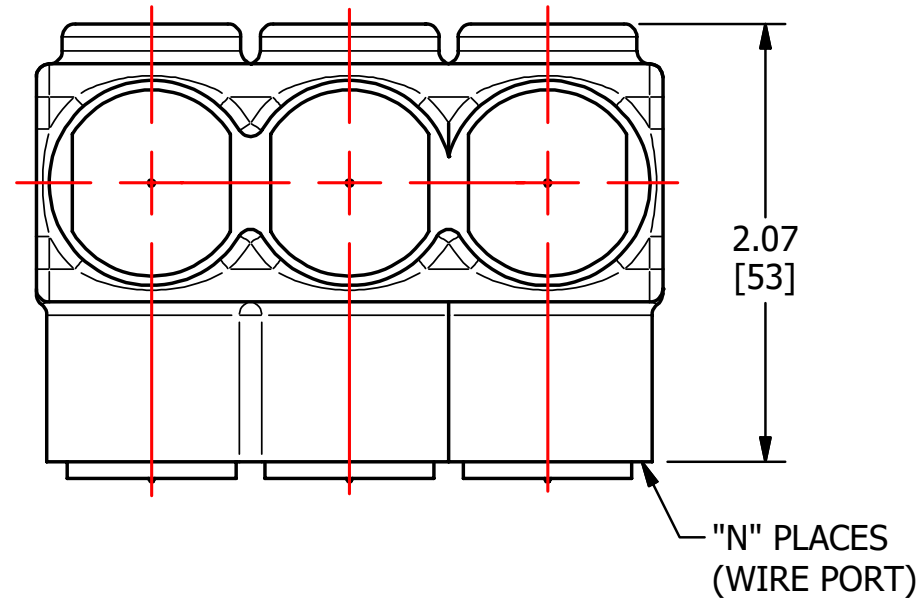


S.NO	CATALOG NUMBER	L	N	SCREW SIZE
1	NACC250-2SI	2.03 [45]	2	5/8-18
2	NACC250-3SI	2.97 [69]	3	5/8-18
3	NACC250-4SI	3.91 [93]	4	5/8-18
4	NACC250-5SI	4.84 [117]	5	5/8-18
5	NACC250-6SI	5.58 [135]	6	5/8-18
6	NACC250-8SI	7.66 [188]	8	5/8-18



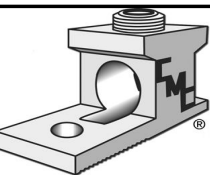
CONNECTOR FINISH: CLEAR PLATE
CONNECTOR MATERIAL: ALUMINUM
CONDUCTOR RANGE: 250 Kcmil - #12 AWG
ENCAPSULE MATERIAL: CLEAR PVC

					TO ORDER CMC PRODUCTS CALL 1-513-860-4455	DRAWN BY: TS 09-24-19	NAME OF PART: ENCAPSULATED BAR ASSEMBLY	CAT. NO.: SEE TABLE
					FOR PRODUCT INFO: http://www.cmclugs.com	CHECKED BY:	DWG NO: C58701644I-S (CHARTED)	A
A	NEW DRAWING CREATED		09-24-19	TS		DRAWING NOT TO SCALE		SHEET NO: 1 OF 1
REV.	DESCRIPTION	ECN	DATE	INIT.				

THIS INFORMATION IS PROPRIETARY TO CONNECTOR MFG. CO. AND IS NOT TO BE DISCLOSED OUTSIDE OF CONNECTOR MFG. CO. WITHOUT A CONFIDENTIALITY AGREEMENT



CONNECTOR MANUFACTURING CO.



HAMILTON, OHIO